

# POWERFULFOREX

## Requirements

PowerfulForex EA works on MetaTrader 4 terminal only. It was created for trading on AUDUSD and EURUSD currency pairs. Minimal deposit is \$340 for both pairs using lot 0.01. Recommended leverage is from 1:100 (bigger leverage is better for reliability).

Contact our support ([support@powerfulforex.com](mailto:support@powerfulforex.com)) if your parameters are lower than the requirements above.

## Quick start

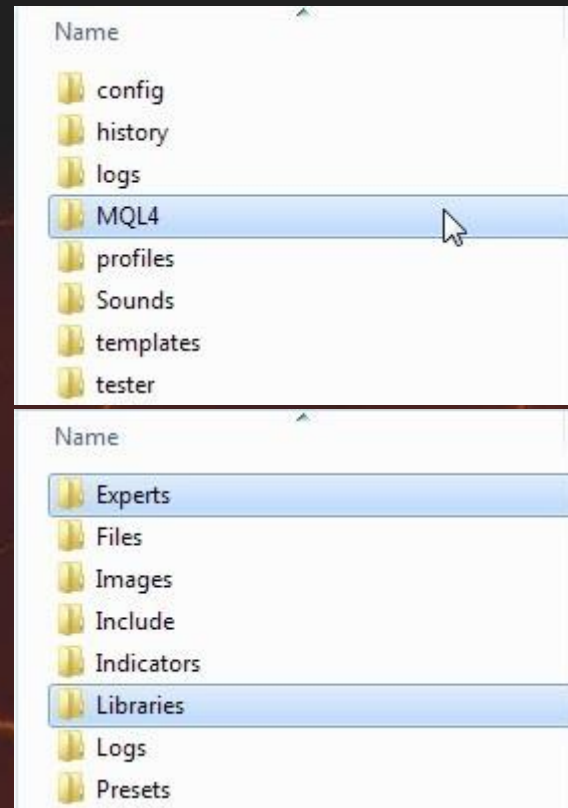
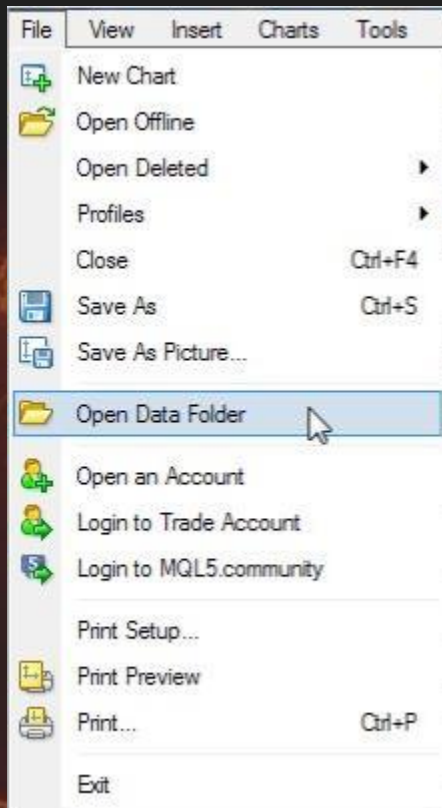
- Run your MetaTrader 4 terminal.
- Open menu “Files”, then “Open Data Folder”.
- Copy the EA’s files from the archive into data folder of your MetaTrader 4 terminal:
  - PowerfulForex.ex4 file to MQL\Experts
  - ForexStore.dll file to MQL\Libraries

(more detailed information about the necessary folders is [here](#))
- Restart your MetaTrader 4 terminal.
- Attach PowerfulForex to EURUSD chart with any time frame. Please notice, you do not need to attach the EA on two charts. PowerfulForex will trade on all the supported currency pairs, if you attach the EA to one chart only.
- Allow “Live trading” and “DLL imports” in Common settings.

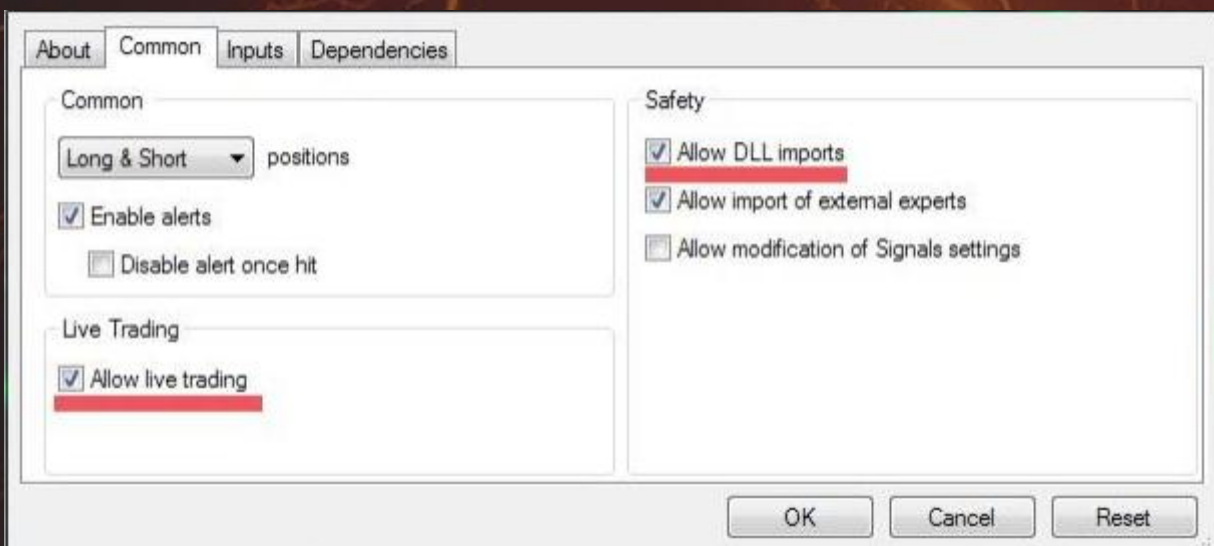
(example of the correctly selected Common settings is [here](#))
- Leave the default values of Input settings or set the desired values there.

(explanation of PowerfulForex parameters is [here](#))
- Make sure that “AutoTrading” is enabled on your MetaTrader 4 terminal.

## How to find the “Experts” and “Libraries” folders



## How to allow “Live trading” and “DLL imports”



## The explanation of PowerfulForex parameters

**RiskLimit** is a percentage of your deposit based on which the EA calculates the first lot. Other lots are based on that first lot. The default value is recommended.

**Lot** is the first lot, which you can set manually. It works only if RiskLimit=0.

**Slippage** means slippage. Do not change it unless you know well what you are doing.

**Trade on AUDUSD/EURUSD** is enabling/disabling the trading on a corresponding currency pair.

**Hedge option** should be disabled for brokers which do not allow to open opposite trades at the same time. The EA does not use hedging. But this option is necessary if you use the EA with other EAs (or trade manually) on one account and the same currency pair.

Contact our support ([support@powerfulforex.com](mailto:support@powerfulforex.com)) if you have any questions.

